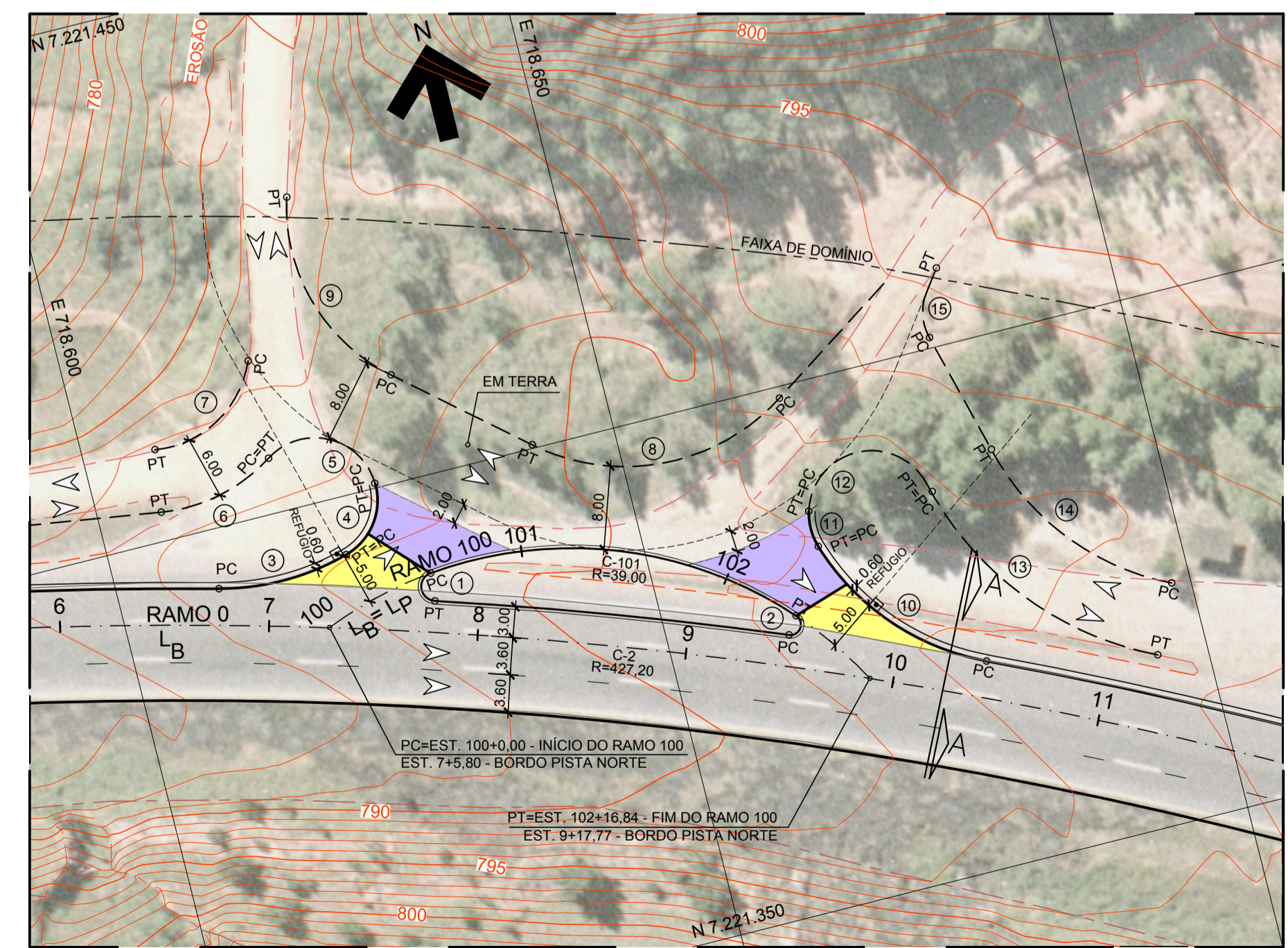


PLANTA GERAL
ESCALA 1:1000



DETALHE A
ESCALA 1:500

- MELHORIA DE ACESSO
- TRATAMENTO PRIMÁRIO

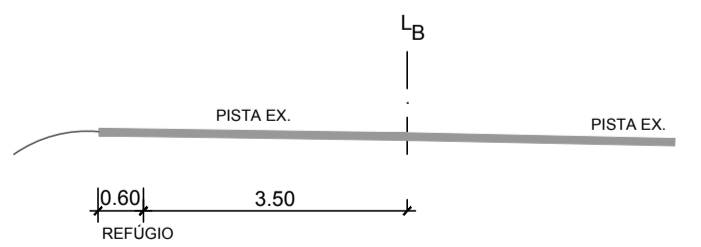
ELEMENTOS GEOMÉTRICOS DOS EIXOS E BORDOS

TABELA DE CURVAS CIRCULARES												
RAMO	CURVA Nº	R (m)	D (m)	AC	T (m)	PC	PT	PONTO	PI	CC	PC	PT
RAMO 0	C-1	307,200	77,621	14°28'37,70"	39,019	0+00,00	3+17,62	N(y) E(x)	7221408,915 718513,884	7221099,574 718499,640	7221405,784 718474,991	7221402,223 718552,324
	C-2	427,200	134,204	17°59'57,90"	67,660	4+19,99	11+14,20	N(y) E(x)	7221386,783 718641,023	7220977,516 718501,101	7221398,386 718574,365	7221355,150 718700,832
RAMO 100	C-101	39,000	56,840	83°30'18,89"	34,812	100+00,00	102+16,84	N(y) E(x)	7221401,312 718651,198	7221352,035 718633,746	7221388,139 718618,978	7221370,790 718667,940

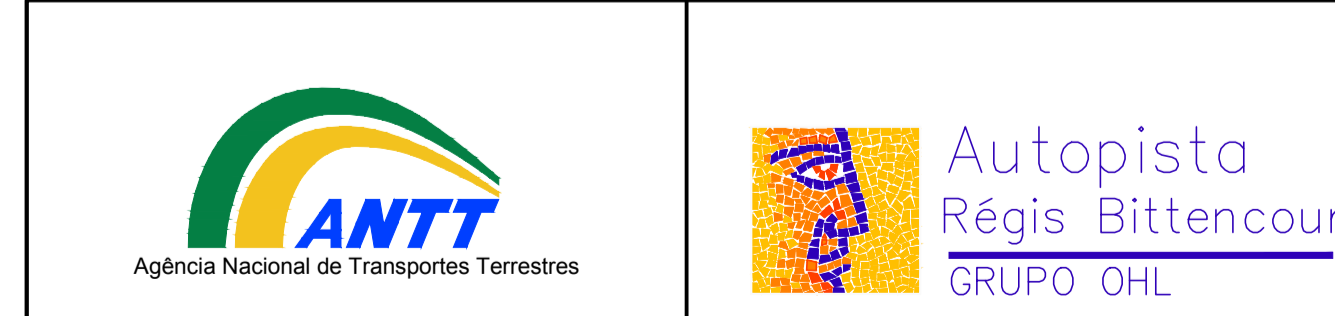
BORDO PISTA NORTE		
PI	ESTACA	COORDENADA
INÍCIO	0+00,00	N(y) 7221405,7840 E(x) 718474,9908
FIM	13+02,96	N(y) 7221341,7015 E(x) 718726,2584

NARIZES E BORDOS					
CURVA Nº	R (m)	PONTO	CC	PC	PT
01	1,368	N(y) E(x)	7221389,456 718629,772	7221390,817 718629,628	7221388,150 718629,364
02	1,000	N(y) E(x)	7221377,644 718661,819	7221376,716 718661,447	7221378,318 718662,558
03	24,000	N(y) E(x)	7221417,566 718615,590	7221394,339 718609,547	7221394,507 718622,244
04	6,000	N(y) E(x)	7221400,272 718620,581	7221394,507 718622,244	7221400,406 718626,579
05	6,000	N(y) E(x)	7221400,272 718620,581	7221400,406 718626,579	7221405,270 718617,261
06	16,000	N(y) E(x)	7221418,599 718608,410	7221405,270 718617,261	7221402,773 718606,054
07	10,000	N(y) E(x)	7221418,599 718608,410	7221414,762 718617,645	7221408,708 718606,937
08	20,000	N(y) E(x)	7221415,564 718655,031	7221398,897 718666,086	7221400,351 718642,047
09	18,000	N(y) E(x)	7221423,828 718642,267	7221410,137 718630,582	7221429,060 718625,044
10	24,000	N(y) E(x)	7221391,531 718689,099	7221369,678 718679,176	7221384,251 718666,230
11	6,000	N(y) E(x)	7221386,071 718671,948	7221384,251 718666,230	7221387,711 718666,176
12	6,000	N(y) E(x)	7221386,071 718671,948	7221387,711 718666,176	7221387,512 718677,772
13	32,000	N(y) E(x)	7221395,201 718708,834	7221387,512 718677,772	7221366,252 718695,196
14	25,000	N(y) E(x)	7221395,201 718708,834	7221372,585 718698,180	7221389,194 718684,567
15	5,000	N(y) E(x)	7221402,326 718686,251	7221401,011 718681,427	7221405,285 718682,220

SEÇÃO A-A
FAIXAS DE ACELERAÇÃO E DESACERAÇÃO



NOTAS:
1. MEDIDAS EM METRO, EXCETO ONDE INDICADO.



FIRMA PROJETISTA	Comas engenharia	1	19/09/2011	REVISÃO GERAL	0	31/03/2011	ESTEBAN COMAS - CREA: 060120345-5	EMISSÃO INICIAL	Nº INTERNO: COM-DE-06-116/PR-031-4-F02/501	REV. 1	REV.	DATA	RESP. TEC./PROJETISTA	RESP. TEC./CONCES.	RESP. TEC./ANTT	ASSUNTO	DOC. REFERÊNCIA	Nº DESENHO ANTT: DE-06-116/PR-031-4-F02/501	REV. : 1
LOCAL: km 031+400 - PISTA NORTE																			
RODOVIA: BR-116 RÉGIS BITTENCOURT																			
TRECHO: SÃO PAULO - CURITIBA																			
TÍTULO: PROJETO GEOMÉTRICO - PLANTA MELHORIA EM ACESSOS BARRIO JAGUATIRICA - CAMPINA G. DO SUL																			
ESCALA: INDICADA																			
FOLHA: ÚNICA																			