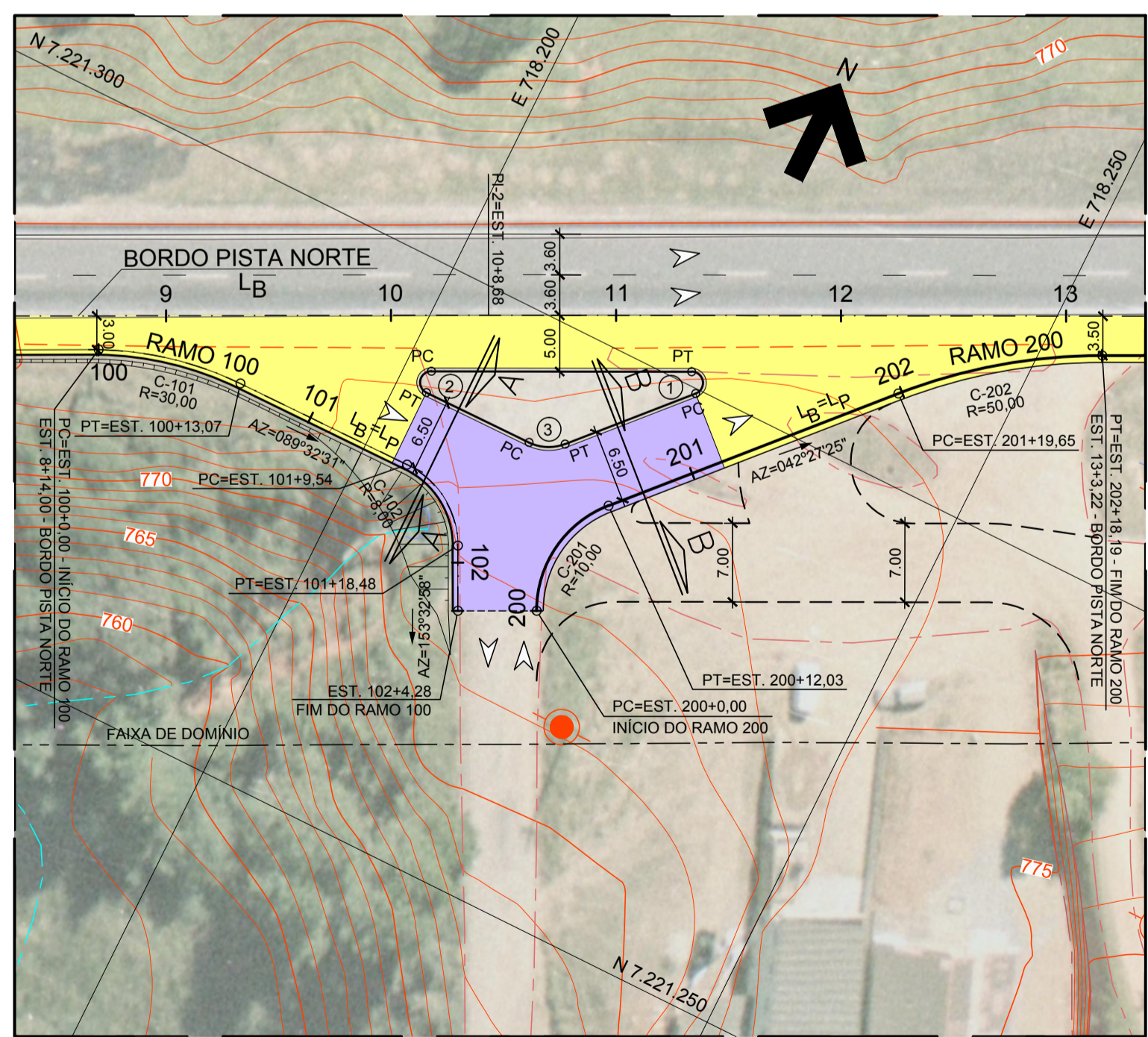


MELHORIA DE ACESSO
 TRATAMENTO PRIMÁRIO

PLANTA GERAL
ESCALA 1:1000



DETALHE A
ESCALA 1:500

ELEMENTOS GEOMÉTRICOS DO BORDO

TABELA DE CURVAS CIRCULARES

RAMO	CURVA Nº	R (m)	D (m)	AC	T (m)	PC	PT	PONTO	PI	CC	PC	PT
BORDO PISTA NORTE	C-1	415,000	153,303	21°09'55,24"	77,535	17+02,64	24+15,94	N(y) E(x)	7221391,328 718394,300	7220984,913 718508,596	7221356,986 718324,785	7221398,254 718471,525
	C-2	300,000	79,861	15°15'08,27"	40,168	24+15,94	28+15,80	N(y) E(x)	7221402,019 718511,516	7221099,575 718499,640	7221398,254 718471,525	7221395,130 718551,089
RAMO 100	C-101	30,000	13,069	24°57'36,22"	6,640	100+00,00	100+13,07	N(y) E(x)	7221282,345 718180,982	7221252,399 718187,861	7221278,530 718174,985	7221282,398 718187,622
	C-102	8,000	8,937	64°00'27,00"	5,000	101+09,41	101+18,34	N(y) E(x)	7221282,570 718209,090	7221274,530 718204,155	7221282,530 718204,091	7221278,094 718211,317
RAMO 200	C-201	10,000	12,027	68°54'27,40"	6,861	200+00,00	200+12,03	N(y) E(x)	7221282,158 718217,114	7221280,469 718229,123	7221276,015 718220,170	7221287,220 718221,745
	C-202	50,000	18,547	21°15'10,14"	9,381	201+19,65	202+18,19	N(y) E(x)	7221314,518 718246,722	7221273,845 718277,278	7221307,597 718240,389	7221318,673 718255,132

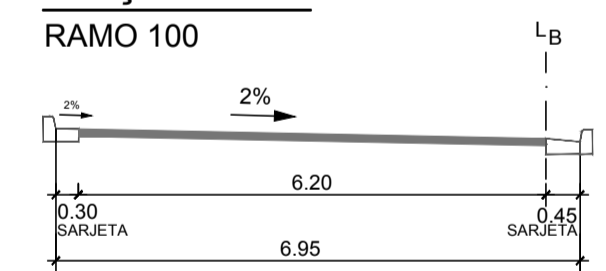
NARIZES E BORDOS

CURVA Nº	R (m)	PONTO	CC	PC	PT
01	1,000	N(y) E(x)	7221300,265 718223,515	7221299,590 718224,253	7221301,162 718223,073
02	1,000	N(y) E(x)	7221290,020 718202,777	7221290,916 718202,334	7221289,020 718202,785
03	4,000	N(y) E(x)	7221293,101 718212,894	7221289,101 718212,926	7221290,401 718215,845

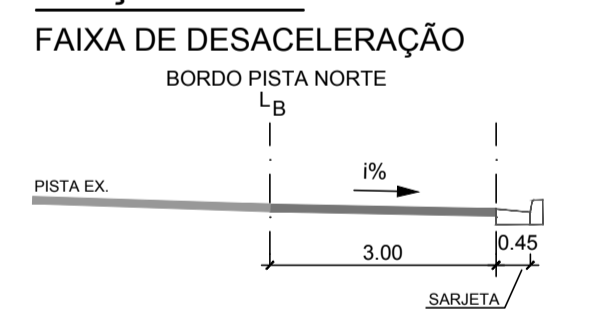
BORDO PISTA NORTE

PI	ESTACA	COORDENADA
INÍCIO	0+00,00	N(y) 7221204,3164 E(x) 718018,0408
1	3+19,36	N(y) 7221239,9708 E(x) 718088,9397
2	10+08,68	N(y) 7221297,6549 E(x) 718204,6850
FIM	29+18,17	N(y) 7221391,2930 E(x) 718573,1306

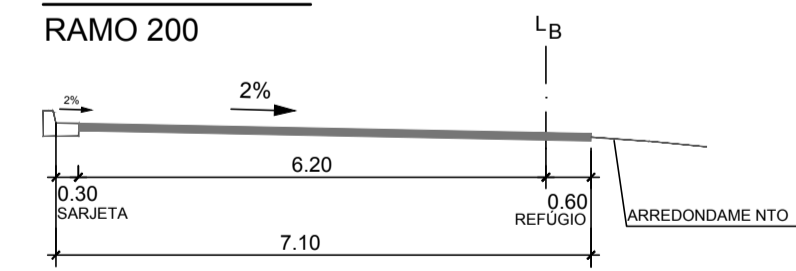
SEÇÃO A-A



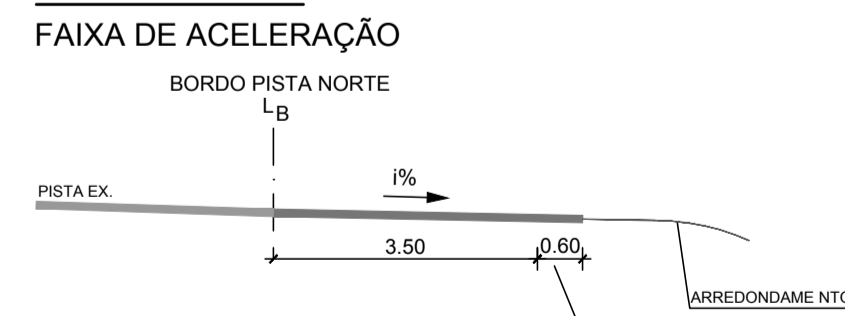
SEÇÃO C-C



SEÇÃO B-B



SEÇÃO D-D



NOTAS:
1. MEDIDAS EM METRO, EXCETO ONDE INDICADO.



FIRMA PROJETISTA	Comas engenharia	1	19/08/2011	REVISÃO GERAL	0	03/03/2011	ESTEBAN COMAS - CREA: 060120345-5	EMISSÃO INICIAL	Nº INTERNO: COM-DE-06-116/PR-031-9-F02/501	REV. 1	REV.	DATA	RESP. TEC./PROJETISTA	RESP. TEC./CONCES.	RESP. TEC./ANTT	ASSUNTO	DOC. REFERÊNCIA	Nº DESENHO ANTT: DE-06-116/PR-031-9-F02/501	REV. : 1
LOCAL: km 031+900 - PISTA NORTE																			
RODOVIA: BR-116 RÉGIS BITTENCOURT																			
TÍTULO: PROJETO GEOMÉTRICO - PLANTA MELHORIA EM ACESSOS BAIRRO JAGUATIRICA - CAMPINA G. DO SUL																			
TRONCO: SÃO PAULO - CURITIBA																			
ESCALA: INDICADA																			
FOLHA: ÚNICA																			