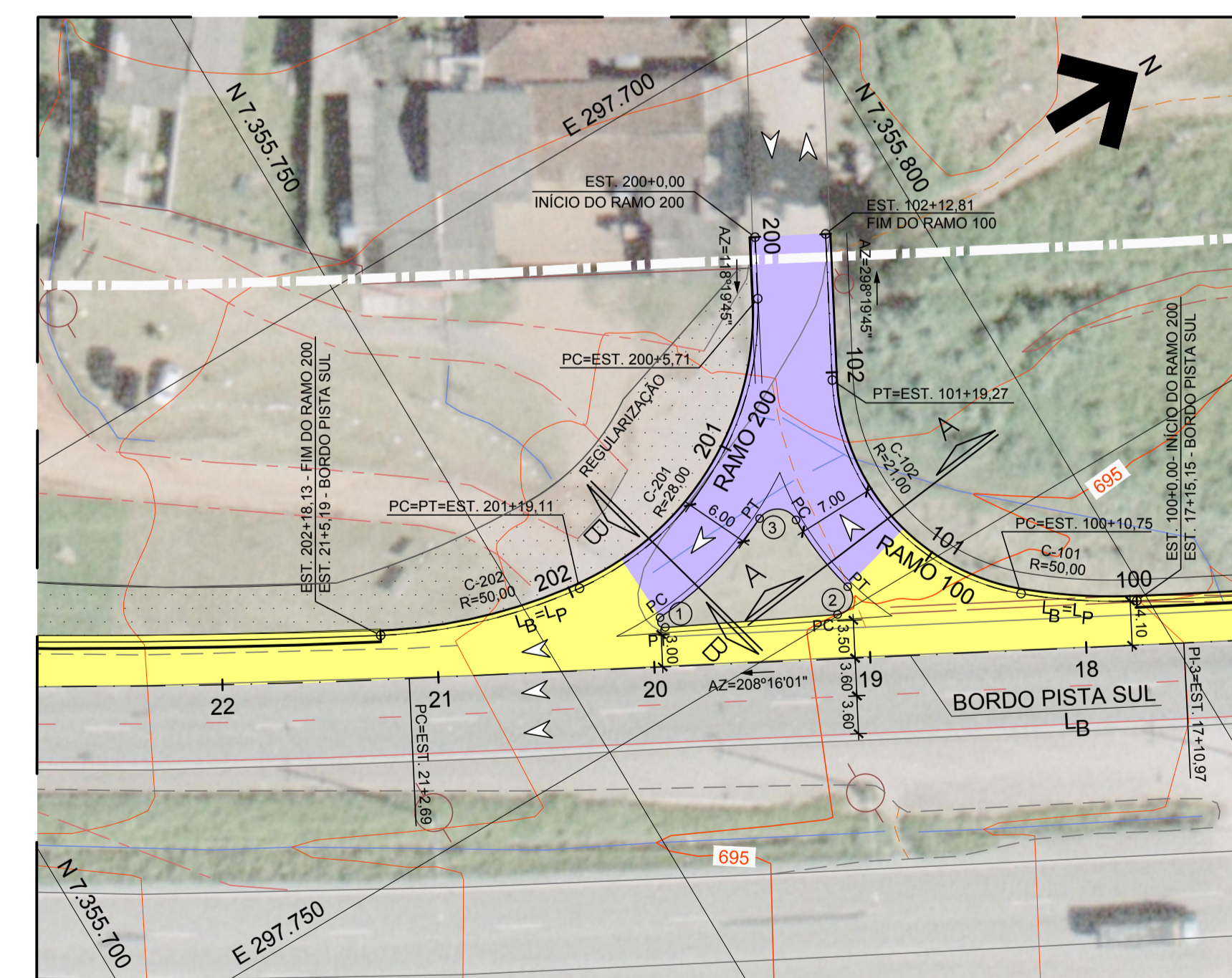


PLANTA GERAL
ESCALA 1:1000



DETALHE A
ESCALA 1:500

ELEMENTOS GEOMÉTRICOS DOS EIXOS E BORDOS

TABELA DE CURVAS CIRCULARES

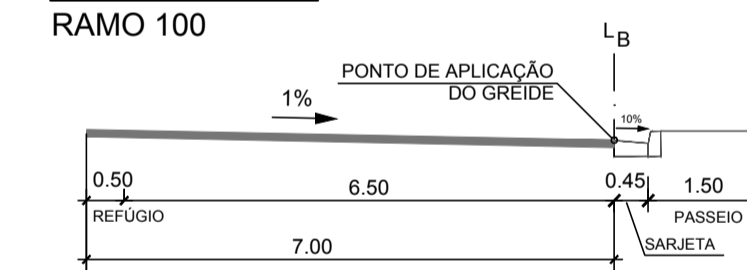
RAMO	CURVA Nº	R (m)	D (m)	AC	T (m)	PC	PT	PONTO	PI	CC	PC	PT
BORDO PISTA SUL	C-1	700,000	70,775	5°47'34,89"	35,418	21+02,69	24+13,47	N(y) E(x)	7355706,404 297717,848	7356069,105 297734,621	7355737,598 297734,621	7355677,062 297698,012
RAMO 100	C-101	50,000	10,754	12°19'21,93"	5,398	100+00,00	100+10,75	N(y) E(x)	7355794,274 297760,447	7355822,662 297718,935	7355799,030 297762,998	7355790,171 297756,940
	C-102	21,000	28,516	77°48'06,31"	16,945	100+10,75	101+19,27	N(y) E(x)	7355777,291 297745,928	7355803,817 297740,978	7355790,171 297756,940	7355785,332 297731,013
RAMO 200	C-201	28,000	33,403	68°21'09,94"	19,012	200+05,71	201+19,11	N(y) E(x)	7355774,258 297737,751	7355758,633 297707,729	7355783,280 297721,016	7355755,375 297735,539
	C-202	50,000	19,015	21°47'20,95"	9,624	201+19,11	202+18,13	N(y) E(x)	7355745,817 297734,419	7355761,193 297685,879	7355755,375 297735,539	7355737,357 297729,832

BORDO PISTA SUL - LB		
PI	ESTACA	COORDENADA
INÍCIO	0+00,00	N(y) 7356110,3947 E(x) 297933,8459
1	1+20,00	N(y) 7356075,1733 E(x) 297914,8868
2	7+20,00	N(y) 7355969,3092 E(x) 297858,3819
3	17+10,97	N(y) 7355800,7660 E(x) 297768,5866
4	26+13,92	N(y) 7355643,5484 E(x) 297675,3555
FIM	26+13,92	N(y) 7355643,5484 E(x) 297675,3555

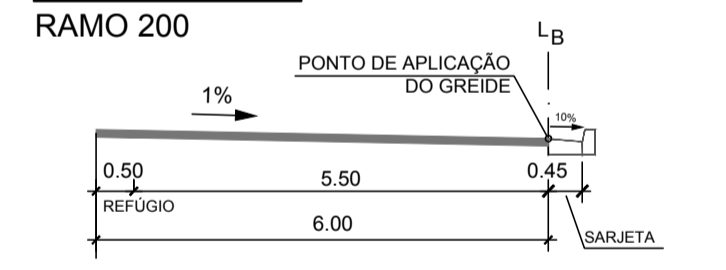
NARIZES E BORDOS					
CURVA Nº	R (m)	PONTO	CC	PC	PT
01	0,500	N(y) E(x)	7355760,402 297742,184	7355760,376 297741,685	7355760,178 297742,631
02	1,500	N(y) E(x)	7355775,302 297748,536	7355774,629 297749,877	7355776,752 297748,151
03	2,000	N(y) E(x)	7355773,823 297740,368	7355775,823 297740,408	7355772,979 297738,554

MELHORIA DE ACESSO
TRATAMENTO PRIMÁRIO

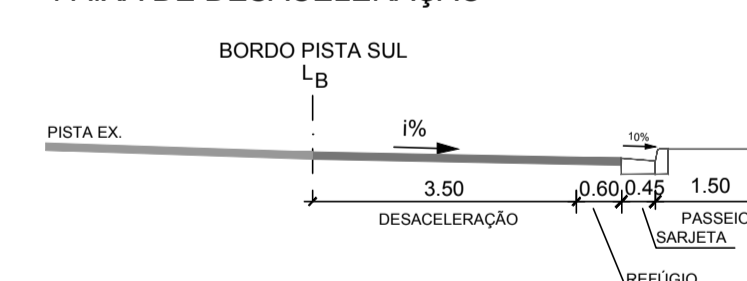
SEÇÃO A-A
RAMO 100



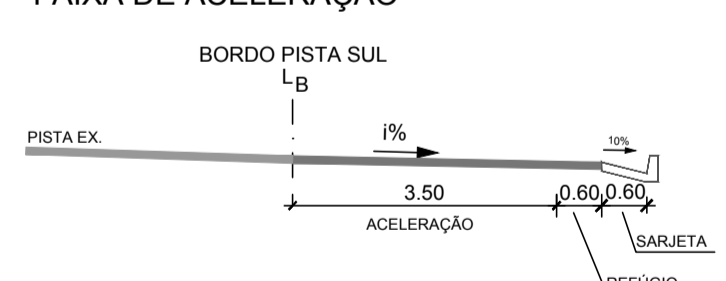
SEÇÃO B-B
RAMO 200




SEÇÃO C-C
FAIXA DE DESACELERAÇÃO



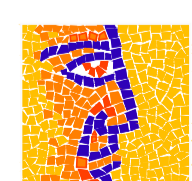
SEÇÃO D-D
FAIXA DE ACELERAÇÃO



NOTAS:
1. MEDIDAS EM METRO, EXCETO ONDE INDICADO.



Agência Nacional de Transportes Terrestres



Autopista Régis Bittencourt
Grupo OHL

FIRMA PROJETISTA	Comas engenharia	Nº DESENHO ANTT:	DE-06-116/SP-314-2-F02/501	REV. :	1
LOCAL:	km 314+250 - PISTA SUL	RODOVIA:	BR-116 RÉGIS BITTENCOURT	TRECHO:	SÃO PAULO - CURITIBA
TÍTULO:	PROJETO GEOMÉTRICO - PLANTA MELHORIA EM ACESSOS BAIRRO PALMEIRINHA - JUQUITIBA	ESCALA:	INDICADA	FOLHA:	ÚNICA
Nº INTERNO:	COM-DE-06-116/SP-314-2-F02/501	REV. 1	REV.	DATA	RESP. TEC./PROJETISTA
1	15/06/2011				REVISÃO GERAL
0	15/01/2011				EMISSÃO INICIAL
					RESP. TEC./CONCES.
					RESP. TEC./ANTT
					ASSUNTO
					DOC. REFERÊNCIA