

ELEMENTOS GEOMÉTRICOS DOS EIXOS E BORDOS

TABELA DE CURVAS CIRCULARES

RAMO	CURVA Nº	R (m)	D (m)	AC	T (m)	PC	PT	PONTO	PI	CC	PC	PT
BORDO PISTA SUL	C-1	850,000	22,356	1°30'25,03"	11,179	34+17,64	36+00,00	N(y)	7327019,221	7326198,785	7327022,005	7327016,153
								E(x)	264281,089	264503,597	264291,915	264270,339
RAMO 100	C-101	55,000	30,551	31°49'33,79"	15,681	100+00,00	101+10,55	N(y)	7327121,966	7327179,135	7327125,842	7327126,685
								E(x)	264668,570	264670,168	264683,764	264653,616
	C-102	20,000	25,398	72°45'32,07"	14,734	102+19,18	104+04,58	N(y)	7327139,736	7327154,375	7327135,302	7327154,470
								E(x)	264612,260	264632,330	264626,311	264612,330
RAMO 200	C-201	10,000	5,545	31°46'11,71"	2,846	200+08,90	200+14,44	N(y)	7327148,418	7327151,214	7327151,264	7327145,991
								E(x)	264604,484	264594,470	264604,469	264602,997
	C-202	50,600	16,330	18°29'26,45"	8,237	202+00,91	202+17,24	N(y)	7327116,400	7327149,852	7327123,424	7327111,103
E(x)	264584,874	264546,025	264589,175	264578,566								
C-203	55,000	24,681	25°42'40,71"	12,552	203+11,71	204+16,39	N(y)	7327093,726	7327143,916	7327101,798	7327090,623	
E(x)	264557,873	264532,115	264567,485	264545,711								

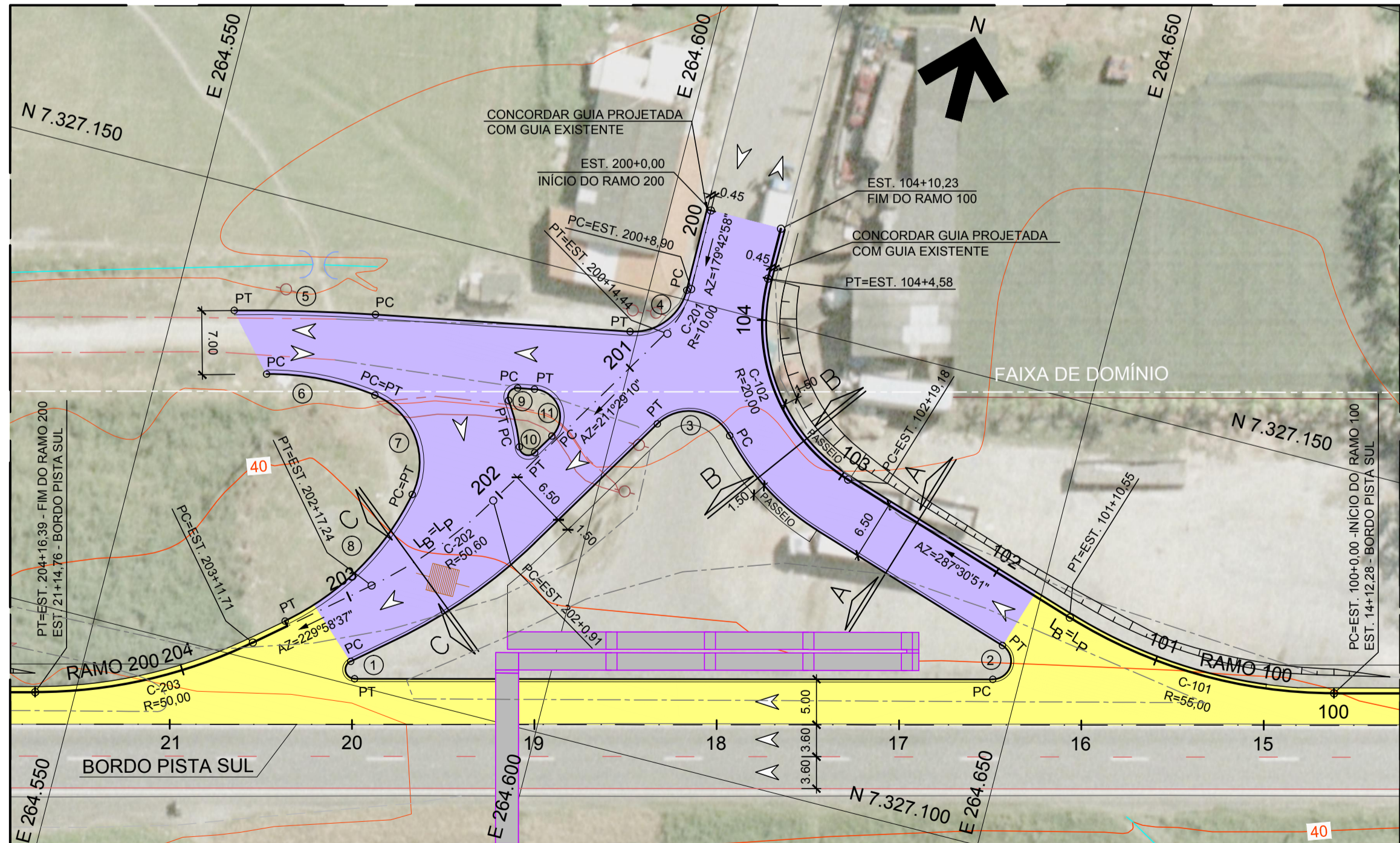
BORDO PISTA SUL

PI	ESTACA	COORDENADA
INÍCIO	0+00,00	N(y) 7327195,3558 E(x) 264967,6777
1	2+15,23	N(y) 7327181,3459 E(x) 264914,2579
2	13+07,63	N(y) 7327128,5453 E(x) 264708,5172
3	28+05,71	N(y) 7327054,8622 E(x) 264419,6961
FIM	36+00,00	N(y) 7327016,1531 E(x) 264270,3392

NARIZES E BORDOS

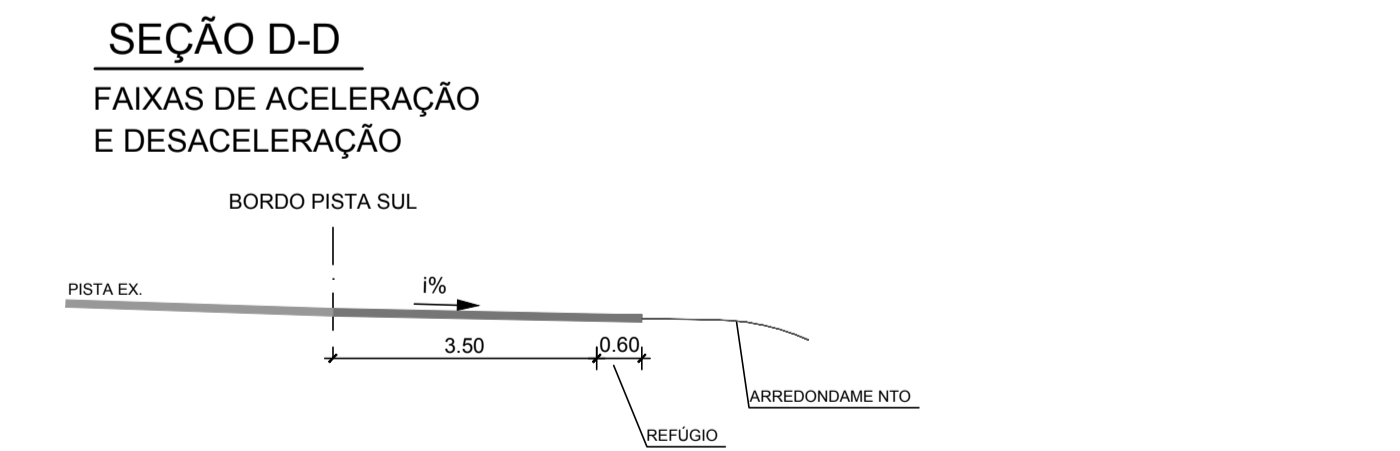
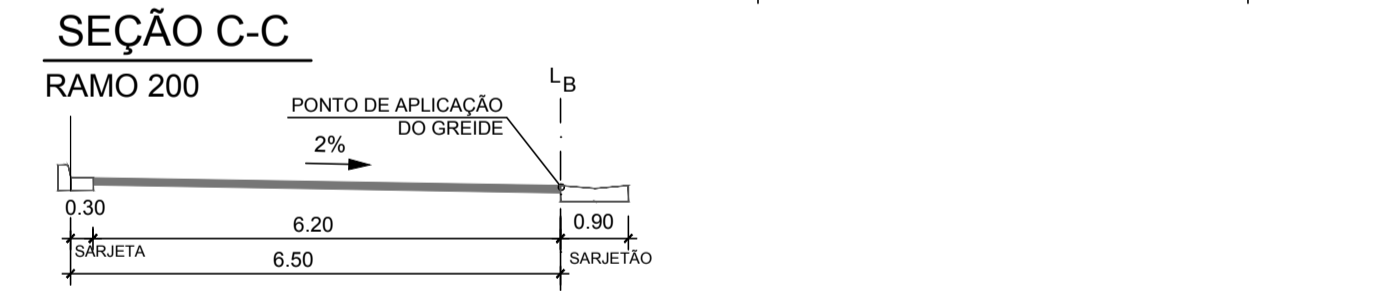
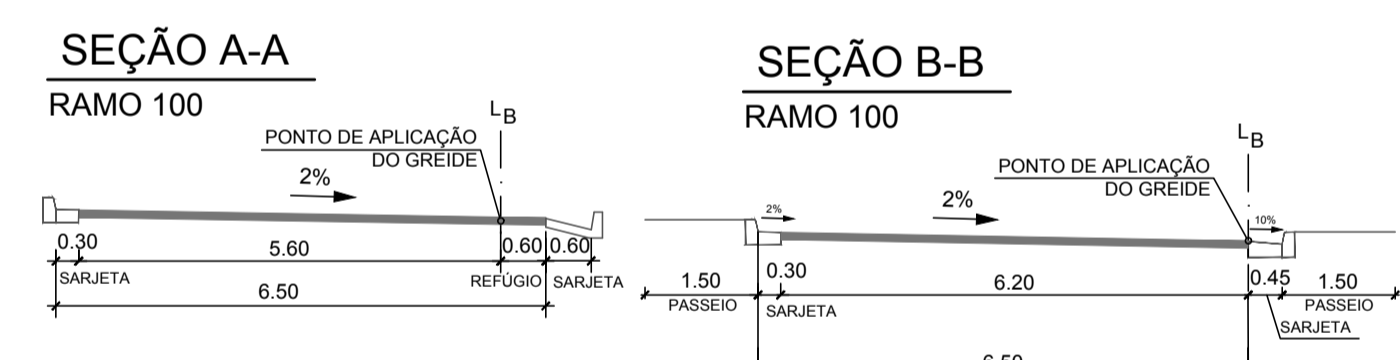
CURVA Nº	R (m)	PONTO	CC	PC	PT
01	1,000	N(y)	7327101,705	7327102,471	7327100,736
		E(x)	264579,037	264578,394	264579,284
02	2,000	N(y)	7327119,979	7327118,041	7327121,886
		E(x)	264646,622	264647,116	264647,224
03	5,000	N(y)	7327133,438	7327136,761	7327136,050
		E(x)	264608,794	264612,530	264604,531
04	6,000	N(y)	7327151,000	7327151,029	7327145,101
		E(x)	264598,021	264604,021	264599,117
05	200,000	N(y)	7326943,355	7327139,987	7327136,566
		E(x)	264608,160	264571,607	264556,491
06	29,999	N(y)	7327101,717	7327130,698	7327131,400
		E(x)	264569,394	264561,644	264573,736
07	8,000	N(y)	7327123,485	7327131,400	7327121,864
		E(x)	264572,578	264573,736	264580,412
08	30,000	N(y)	7327127,941	7327121,864	7327104,968
		E(x)	264551,034	264580,412	264570,327
09	1,000	N(y)	7327135,062	7327136,045	7327134,483
		E(x)	264588,887	264588,704	264588,071
10	1,000	N(y)	7327130,167	7327129,832	7327129,644
		E(x)	264591,429	264590,486	264592,282
11	3,000	N(y)	7327133,436	7327131,869	7327136,386
		E(x)	264591,086	264593,644	264590,538

MELHORIA DE ACESSO
TRATAMENTO PRIMÁRIO



DETALHE A ESCALA 1:500

PLANTA GERAL ESCALA 1:1000



NOTAS:
1. MEDIDAS EM METRO, EXCETO ONDE INDICADO.

Agência Nacional de Transportes Terrestres

Autopista Régis Bittencourt
Grupo OHL

FIRMA PROJETISTA							Nº DESENHO ANTT:	DE-06-116/SP-369-3-F02/501	REV. :	1		
	1	30/07/2011					LOCAL:	km 369+300 - PISTA SUL				
	0	15/01/2011	ESTEBAN COMAS - CREA: 060120345-5				RODOVIA:	BR-116 RÉGIS BITTENCOURT	TRECHO:	SÃO PAULO - CURITIBA		
							TÍTULO:	PROJETO GEOMÉTRICO - PLANTA MELHORIA EM ACESSOS BAIRRO SANTA RITA - MIRACATU				
COM-DE-06-116/SP-369-3-F02/501	REV. 1	REV.	DATA	RESP. TEC./PROJETISTA	RESP. TEC./CONCES.	RESP. TEC./ANTT	ASSUNTO	DOC. REFERÊNCIA	ESCALA:	INDICADA	FOLHA:	ÚNICA